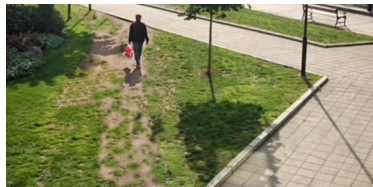


*"For safety's sake—do something."*

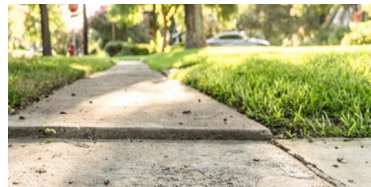
## Slips, Trips, and Falls - Hazards on Industrial Sites

OSHA maintains general industry regulations on walking / working surfaces that guard against hazards such as; excess clutter, protruding objects, and wet conditions just to name a few. These hazards can harm everyone in a facility, regardless of their job title or job responsibilities. In the images below, we look at some of the most common STF hazards found on industrial sites. Keep an eye for these types of hazards when performing work on industrial sites.

**Walk path shortcuts:** Always stay on the designated walk path. Non-designated shortcuts have hazards such as slippery or uneven surfaces that can lead to sprained ankles and falls. Dirt, debris, and mud can build up on your shoes and break traction when accessing different floor surfaces.



**Uneven sidewalks and pathways:** Take caution when walking around campus to or from the parking lots. Keep an eye out for uneven sidewalks and pathways. The Americans with Disabilities Act (ADA) defines a 'trip hazard' as any vertical change of over 1/4 inch at any joint or crack.



**Damaged and non-uniform stairs:** Always look out for damaged and irregular stairs. These are more common in aging facilities. Always hold the handrail for stability. Report unsafe conditions immediately.



**Extension cords:** Commonly used on industrial sites, these cords if not properly protected, can cause trips and falls. Keep cords off of stairs, not placed in doorways, or across walkways. Use matting and signage to alert employees to possible trip hazards.



**Pallets and other objects:** Keep an eye out for pallets and objects that may be placed near walk paths. Boxes, cans, papers, and other items can all be trip hazards. These can create significant trip hazards as people get comfortable with them in the work area.



**Wet or dry contaminants:** It is imperative that floors remain clean and free from spills / debris. Both can result in serious falls. Always clean up spills or report such issues immediately.



*Together, we all must look out for ourselves and others to ensure we are safe at work.*

**Be a safety champion and remember,**

**"Safety always is  
ALWAYS!"**